

GO BLUE PROJECT NEWSLETTER

The official newsletter of the Go Blue Project Kenya

This publication was produced with the financial support of the European Union. Its contents are the sole responsibility of Go Blue Project and do not necessarily reflect the views of the European Union



The Go Blue Project is a result of collaboration between the EU and the Government of Kenya to advance the Blue Economy Agenda through Coastal Development with an overall objective to unlock the potential of land-sea opportunities in coastal urban centers for sustained, inclusive and sustainable economic growth with employment impact, while conserving and sustainably using the coastal and marine environment as well as promoting effective and integrated maritime governance.

Inside this issue:

1. UNEP and UN-HABITAT - Page 2
2. Expertise France - Page 5
3. Germany's Development Corporation Agency, GIZ - Page 7
4. Italian Agency for Development Cooperation (AICS) - Page 10
5. Camões, I.P - Page 11

UNITED NATIONS HUMAN SETTLEMENTS PROGRAMME (UN-HABITAT) AND UNITED NATIONS ENVIRONMENT PROGRAMME (UNEP)

Innovative Land-Sea Planning and Management for a Sustainable and Resilient Kenyan Coast

The Go Blue Project Result Area 2 is jointly implemented by United Nations Human Settlements Programme (UN-Habitat) and United Nations Environment Programme (UNEP). The Project aims at enhancing land-sea planning and management by addressing key socio-economic and environmental challenges while stimulating benefits from the blue economy.

Objectives

- Implement an integrated, ecosystem-based approach to land- sea planning and management by formulating land-sea planning guidelines.
- Ensure participation and inclusivity of women and young people and creation of jobs.
- Enhance institutional and individual capacities for a sustainable blue economy in coastal urban areas

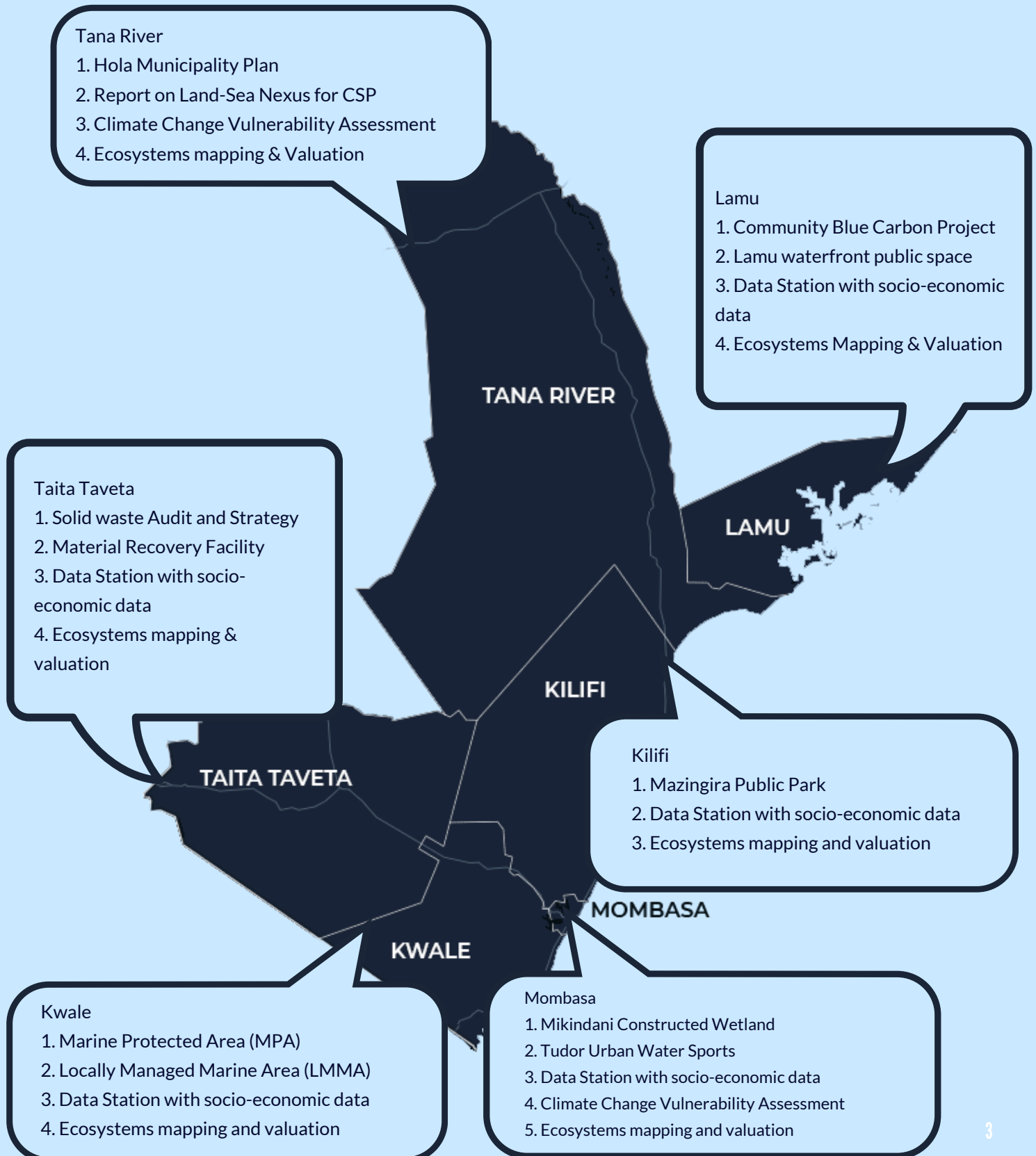
General activities being implemented across all counties:

- County Data Stations – UNEP and UN-Habitat have created data stations in the Lands Department in all coastal County Offices, which are hosting data on spatial planning, environment, blue economy, WASH (Water, Sanitation & Hygiene), etc. and is useful across all county departments, enabling informed decision making and efficient resource allocation.
- Enhancing Technical Capacity for staff - county staff have received training to effectively utilize the data centres, thereby enhancing county staff’s ability to manage data and information.
- Coastal and Marine Ecosystems Assessments Mapping & Valuation - the project is assessing and valuing coastal and marine ecosystems, climate change vulnerability, and socio-economic factors.



CONNECTING PEOPLE, CITIES & THE OCEAN

SUMMARY OF ACTIVITIES



CONNECTING PEOPLE, CITIES & THE OCEAN

SPECIFIC COUNTY ACTIVITIES

County	Activities
Kilifi	<ul style="list-style-type: none"> • Designing and developing Mazingira Park in a participatory manner
Kwale	<ul style="list-style-type: none"> • Implementation of an effective Diani – Chale Marine National Reserve and revising the Kisite-Mpunguti Marine National Reserve management plan through public consultations- Supporting locally managed marine areas (LMMAs) to enhance the conservation of coastal and marine resources. • Local communities are being trained, especially youth and women, on alternative livelihood opportunities through customized solutions for MPA and areas of co-management.
Lamu	<ul style="list-style-type: none"> • Developing a community mangrove blue carbon facility with the aim of conserving coastal and marine ecosystems while tapping into the economic benefits. The project is targeting 3000ha which is expected to bring in approximately \$600,000 per year from the carbon market for community development and conservation. • Developing a public space near King Fahd Hospital by planning with the community, incorporating culture-sensitive designs and sustainable construction.
Mombasa	<ul style="list-style-type: none"> • Constructed Wetland in Mikindani to treat sewerage and wastewater that is discharging from the Mikindani informal settlements into the Tudor Creek causing pollution of the marine environment. • Transforming the Tudor Beach Public Space in Mvita to be more appealing and socio-economically useful to improve the public beachfront and celebrate cultural heritage.
Tana River	<ul style="list-style-type: none"> • In collaboration with the County government, the project is developing the Hola Municipality Local Physical & Land-use Development Plan (LP&LDP) that will further contribute to the county’s urbanization and village cluster programme and pilot the land-sea planning guidelines at a municipal scale.
Taita Taveta	<ul style="list-style-type: none"> • A solid waste audit was carried out with the aim of classifying waste and documenting the waste management processes of residents- A solid waste management strategy was developed in a participatory manner for Voi, Mwatate, Wundanyi, and Taveta based on the audit findings. • The project has constructed a solid waste recovery facility at Chakaleri to enable recycling and better collection of waste. This is creating employment for women and youth in recycling, collection, and separation of solid waste.

EXPERTISE FRANCE GROUPE AFD

Maritime Safety and security's aim to create a safe and secure Kenyan maritime territory is key to further develop and expand a sustainable thriving blue economy, while improving the lives and livelihoods of the coastal communities through new income-generating activities and opportunities

COMMUNITY WATCH PROGRAMME (CWP)

81

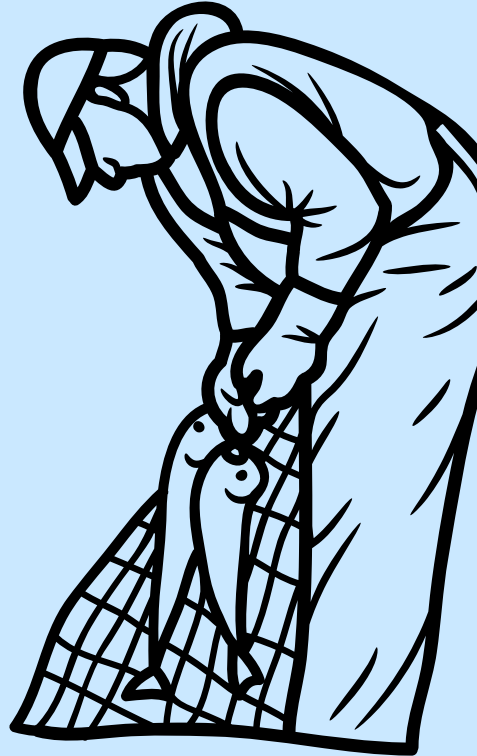
Beach Management Units (BMUs) have already benefited from the CWP initiative in the five coastal counties

120

Safety Trainings for Fishers implemented by KCGS with the project's support

1920

fishers trained and equipped on safety at sea by KCGS with the project's support



464

fishers trained and equipped by KCGS independently

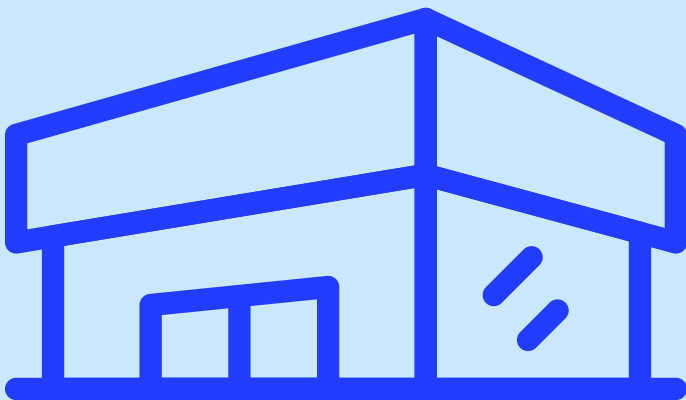
29

Safety Training for Fishers independently implemented by KCGS

35

KCGS officers trained to deliver Safety Training for Fishers

OPERATIONS MANAGEMENT



Establishment of the KCGS Operation Centre (XOC)

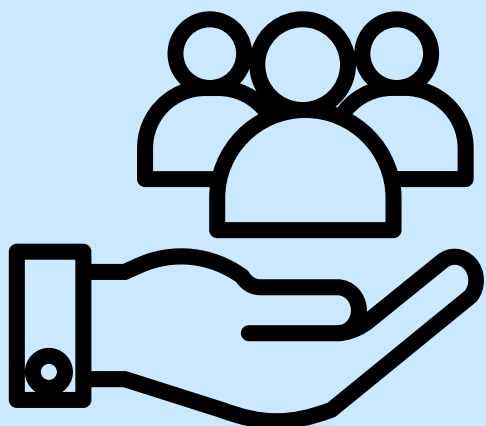
48

coxswains from Kenya Fisheries Service (KeFS), Kenya Maritime Authority (KMA) and Kenya Coast Guard Service (KCGS) trained by the project on patrol and operations at sea

27

27 KCGS management trained as XOC officers

SUPPORT TO FISHERIES ENFORCEMENT



134

Fisheries personnel from Kenya Fisheries Service (KeFS) and County Governments trained on MCS

6

Monitoring, Control & Surveillance (MCS) successfully implemented

INTERAGENCY COOPERATION

1

One interagency curriculum on maritime governance developed with 15 different contributing agencies

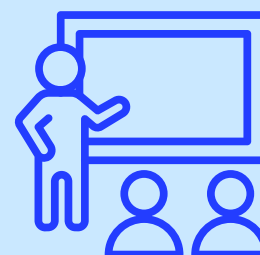


SEARCH & RESCUE (SAR)



5

Search & Rescue (SAR) contingency plans developed to streamline responsibilities on SAR operations at county level



4

interagency workshops organized at county level

5



Search & Rescue (SAR) boats delivered

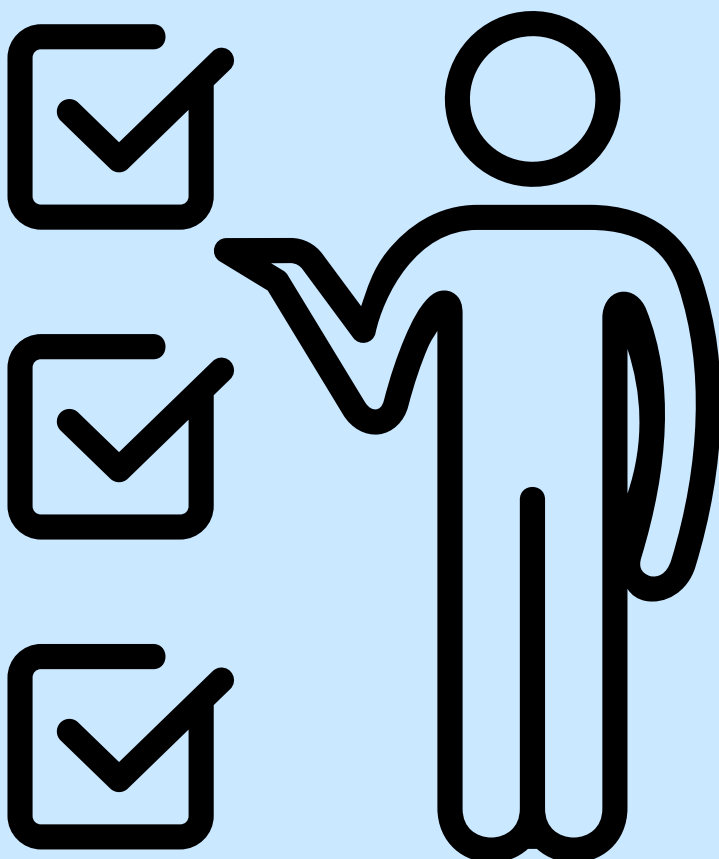
GERMANY'S DEVELOPMENT CORPORATION AGENCY, GIZ

The Go Blue Project's interventions in Skills Development & Matching, Aquaculture Value Chain Development, and Micro, Small, and Medium Enterprise (MSME) support aimed to empower youth and women in blue economy sectors, enhance aquaculture value chains, and promote sustainable business practices.

SKILLS DEVELOPMENT & MATCHING

The Skills Development & Matching component focused on vocational training for youth and women in blue value chains. The project trained 3,200 individuals in Vocational Training Centers (VTCs) on Maritime transport and logistics, Tourism and Hospitality, Vessel Repair and Maintenance, Maritime Security, Agribusiness, and Aquaculture. The VTCs involved were Ukunda in Kwale, Kisauni in Mombasa, Gede, Kakuyuni and Mariakani in Kilifi, Tumaini in Tana River and Lamu in Lamu county which became known as partner VTCs

Jointly with the partner VTCs, technical assistance offered by CAP YEI and TVETA/CDAAC developed and validated modularized Competency Based Educational and Training (CBET) curricula with integrated transferable skills (ICT, entrepreneurial, soft and work readiness skills), rolled out TVET in Centre of Excellency (CoEs), capacity development of partner VTCs through Training of Trainer (ToTs), digitalized the TVET (e-learning platform and digital curricula content); Integrated Entrepreneurship Development Program (EDP) which supported enterprise development through MSME Labs integrated in CoEs, business development skills (BDS) for Blue Economy (BE) MSMEs, accelerator with incubation Services.



The partner VTCs also collaborated and networked with the private sectors to offer matching services with industry for Job information and placement platform and services, Post-training business mentorship and training of industry mentors and assessors.

The collaboration between partner VTCs and the industry was designed to take place before, during and post TVET and featured curriculum development, skills needs assessment and demand, guest lectures, field visits, industrial attachment /practical training, mentoring, placements.

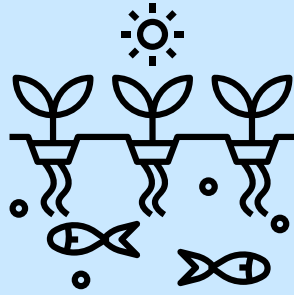
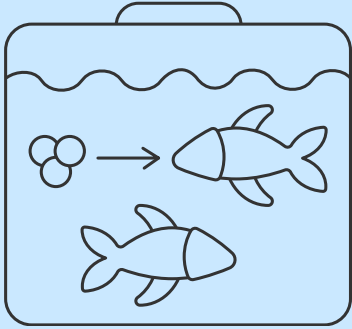
AQUACULTURE VALUE CHAIN DEVELOPMENT

1900

supported aquaculture enterprises/fish farmers

415

green jobs created



Aquaponics demo farm established at Mariakani VTC in Kilifi, to support aquaponics training in the coast.

226

trained master trainers

The first milkfish hatchery is under construction, in partnership with Kwetu Training Center, to support mariculture value chains and marine research.

1900

supported aquaculture enterprises/fish farmers



Documentation of the Strategic Environmental Assessment report (SEA) of aquaculture in the Kenyan coast

1,770

Enterprises with improved business capacities across the coastal region

LVI 6

Aquaculture TVET curriculum developed and accredited in collaboration with Pwani University and TVETA (including adding mariculture to the curriculum). Rolling out of the curriculum in 6 partner VTCs ongoing, including ToT.



MICRO, SMALL AND MEDIUM ENTERPRISE (MSME) SUPPORT

545

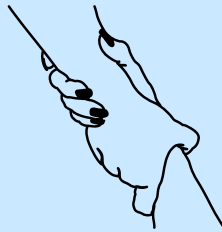
MSMEs in the Blue Economy have been supported through upskilling and upscaling, namely incubation and business development services.

5



modularized Competency Based Education and Training (CBET) curricula developed and validated with Technical and Vocational and Vocational Education and Training Authority (TVETA), including transferable skills training modules on work readiness, soft and entrepreneurial skills, ICT & HSE skills.

9



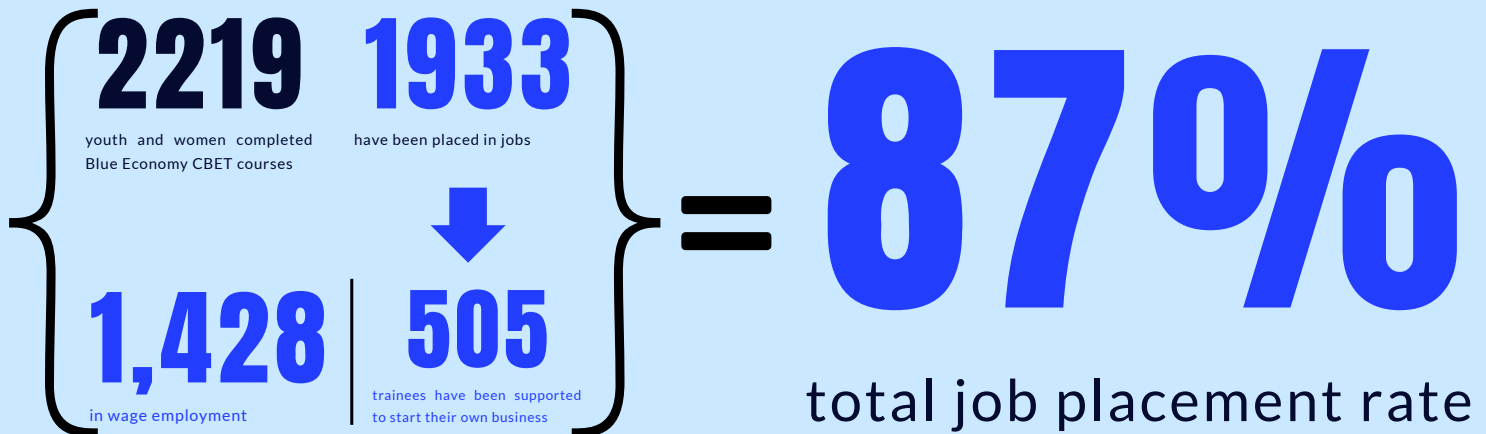
VCT's partnered with which included setting up of 6 Blue Economy (BE) vocational training s Centre of Excellency (CoEs) and 1 Agribusiness/Agripreneurship demonstration farm.



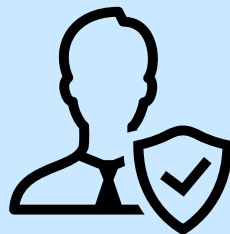
- Entrepreneurship development “sub-program” established to grow youth led MSMEs and to promote entrepreneurship in the Blue Economy.
- MSME labs in CoEs established to provide Business Development Services and acceleration for MSME support.



Digitalization of TVET curricula and equipping the CoEs with customized digital e-learning platforms and uploading training content.



111 + 51
VTC instructors VTC managers
trained on CBET methodology and approach across 51 VTCs



3 Aquaculture agents and 226 master trainers identified and trained in aquaculture value chains, including extension officers, advanced fish farmers and VTC staff.

2443

MSMEs including

100 young farmers exposed to the demo farms' and taught on best practices in tilapia value chains to increase their productivity, hence increase income.

3

additional VTC partnerships with two centres in Kilifi County and one in Tana River County established.

2

fish nurseries established in Tana River and Taita Taveta County respectively to support aquaculture in tilapia and catfish value chains.

1,898

aquaculture enterprises/fish farmers have been supported and provided with necessary skills including business development and technical skills to enhance their business capacities.

12 mid-tier MSMEs (better performing in their local area) supported to upgrade and transform their enterprises to model farms through business development studies, coaching, mentorship, and financial support.

415

green jobs have been created with 55 being green jobs in the Aquaculture sector along the tilapia value chain, among others.

ITALIAN AGENCY FOR DEVELOPMENT COOPERATION, AICS

ENHANCED FISHERIES CO-MANAGEMENT AND STRENGTHENED FISHERIES VALUE CHAINS FOR SHARED PROSPERITY, INCLUSIVE ECONOMIC GROWTH AND JOB CREATION

232

(33 women & 32 youth) received business management training

47

BMU management staff participated in skills development training (9 women, 15 youths)

9

BMUs adopted and applied Code of Conduct (MoUs for Boats' Management signed by JKP/BMUs and waiting for Counties' approval)

IMPROVED CAPACITY OF FARMER GROUPS TO OPERATE ALONG THE CASSAVA VALUE CHAIN

2 + 20 + 3 = 25

agric officers from the 2 counties farmer reps from both counties reps from KALRO involved in the value chain analysis; total 25

involved in the value chain analysis

70ha

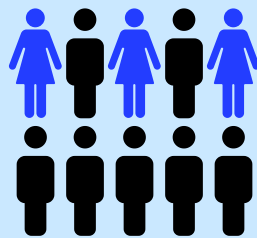
(20 ha in Magodi & 50 ha in Matsangoni under cassava cultivation)

50%

of target producers accessed new market channels (Magodi)

30%

of farmers have knowledge provided by extension service providers



139

(of which 40 women) county extension service providers to be trained

20

producers trained on improved cassava variety production, techniques for climate change adaptation, conducting post-harvest and added value activities and cultivating improved cassava varieties

ENHANCED CAPACITY OF JKP SECRETARIAT TO DELIVER ITS MANDATE INCLUDING FORMULATION OF INTEGRATED STRATEGIES AND ECONOMIC BLUEPRINTS FOR SUSTAINABLE AND INCLUSIVE GROWTH OF THE COASTAL REGION

46

Go Blue coordination workshops facilitated and/or organized by the JKP Secretariat

14

field visits and inspections conducted in support of project activities

1

(revolving fund) type of financial tools developed and/or promoted for MSMEs (Boats' Management)

5

events/conferences organized and/or facilitated by the JKP Secretariat

CAMÕES, I.P

Camões, I.P., the Portuguese Cooperation agency, with the funding entrusted by the European Union, is contributing to advancing inclusive employment in the Tourism and Cultural Heritage cross-sector in Jumuiya ya Kaunti za Pwani-Kenya's coastal counties economic bloc by:

- Increasing JKP's capacity to plan inclusive Tourism and Cultural Heritage through Integrated Governance, which should result in one Regional blueprint approved, implemented and monitored by relevant stakeholders
- Generation of new employment and new dynamics in value chains cross-sector through innovative small projects and businesses in Tourism and Cultural Heritage, by awarding around 17 small grants to private, public and civil society entities, resulting in the creating of 50 new jobs, targeting specially youth and women
- Support young job seekers to become social entrepreneurs through the flagship project Ubuntu Leaders Academy, where at least 100 are able to create their business or find jobs

GRANT AMOUNT DISTRIBUTION BY LOT

LOT 1 → **220,799**
EUROS

Lot 1 Approved Amount



166,765.07
EUROS

Lot 1 Disbursed Amount

LOT 2 → **153,600**
EUROS

Lot 2 Approved Amount



106,103
EUROS

Lot 2 Disbursed Amount

REVENUE GENERATED BY GRANTEEES



24,946.70 EUROS

Total Sum of Revenue Generated

1115.79 EUROS

Generated by Lot 1

20970.89 EUROS

Generated by Lot 2

JOBS CREATED

123

Total Jobs Created through lot 1 and lot 2 funding



70

Female



53

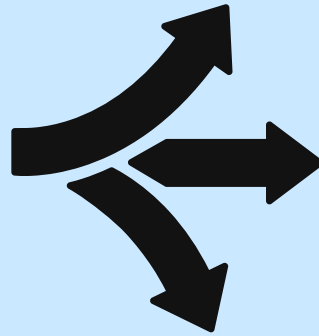
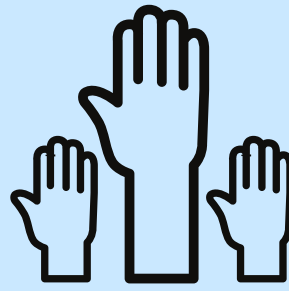
Male

94 Youth

29 Over 34

28

Volunteer Work



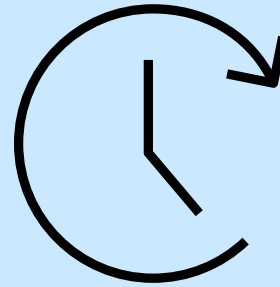
72

Long Term Work



23

Short Term work



FOLLOW US:



WWW.GOBLUE.CO.KE